



*Santa Claus Lane Parade • November 23 • 7 p.m.*



**MAIN DETAILS:** The Grand Marshals of the upcoming Santa Claus Lane Parade, Friday, November 23 are our very own NYS Girls Volleyball Champs, the lady Panthers of Portville Central. The ever-popular Parade is the official kick-off to the holiday season in the area in which Santa and Mrs. Claus light thousands of skylines and snowflakes and stars in downtown Olean.



**JUDGES:** Chamber officials have invited area residents to judge this year's parade: Paula Snyder, Jamestown Community College; Max Bullers, Home Depot of Olean, and Linda Letts, Microtel Inn & Suites by Wyndham.

The judges will be located in a Close's Lumber truck on North Union Street near Laurens Street intersection.



Moderat  
4/4  
Here  
mf  
4

3  
Right  
4/4

Accompaniment  
Moderately  
4/4  
mp

Moderat  
4/4  
Here  
mf  
4

3

1  
Santa Claus!  
1

ata Claus

one octave higher than

1

© 1947 (Renewed) Gene Autry's "I'll Be Home for Christmas"  
Arrangement © 2009 (Renewed) Gene Autry  
All Rights Reserved. "I'll Be Home for Christmas"

1

1  
Santa Claus!  
1



**OFFICIAL EMCEES:** WPIG-FM will be the official emcees of the parade and will announce the parade line up at their official emcee booth near the intersection of Union and State Streets.

**PARADE START/DIRECTION:** The Parade is scheduled to begin at 7 PM on Friday, November 23, near the Burger King on North Union Street in Olean. The Parade will travel south on Union to just past Lincoln Park where units will begin to disperse once they arrive at Henley Street. The parade will use **BOTH SIDES** of the street.



**Eight awards** will be presented in the following categories: **The Blitzen Award**, sponsored by **Times Herald** will go to the most photogenic float or unit; **The Seasons Greetings Award**, sponsored by **Miller's Farm Market** to the best newcomer to the parade, and one that typifies a welcoming theme - this unit must be a first-time entrant; **The Rudolph Award**, sponsored by **National Grid Co.**, for the float with the most or best use of lights; **The Snowflake Award**, sponsored by the **Street Classics Car Club** for the unit with the most participants in the parade, **Angelic Spirit Award**, sponsored by **Mandy's Flowers**, will go to the most spiritual/religious float or unit. **The Elves Award**, sponsored by **Owl Homes Group**, will go to the float or unit that best typifies the holiday through the eyes of a child; **Jingle Bells Award**, sponsored by **Microtel Inn of Olean**, will go to the best theatrical (music/dance) float or unit; and **The Sleigh Award**, presented by **the Bantelman Agency**, will go to the most decorated larger truck (fire truck, flatbed, utility vehicles, etc.)

**STREET CLOSING / PARKING / SPECTATOR INFO:**

Delaware Avenue will be closed to traffic at 6 p.m. with North Union Street closing to traffic at 6:45 PM. The City's downtown parking lots will be opened and free to park. The City Building's restrooms will be opened the night of the parade from 6 - 8:30 PM. Extra uniformed personnel of the Olean Fire and Police Departments will be on hand. Lost children should



ata Claus

one octave higher than

© 1947 (Renewed) Gene Autry's 1976 arrangement © 2009 (Renewed) Gene Autry's 1976 arrangement. All Rights Reserved. This

1

Comes S  
(Right Down Sant

1

Santa Claus!

1

ata Claus

one octave higher than

© 1947 (Renewed) Gene Autry's 1976 arrangement © 2009 (Renewed) Gene Autry's 1976 arrangement. All Rights Reserved. This

1

Right

Accompaniment  
Moderately

4/4

Moderat

4/4

Here  
mf

4

3

Right

Accompaniment  
Moderately

4/4

© 1947 (Renewed) Gene Autry's 1976 arrangement © 2009 (Renewed) Gene Autry's 1976 arrangement. All Rights Reserved. This

© 1947 (Renewed) Gene Autry's 1976 arrangement © 2009 (Renewed) Gene Autry's 1976 arrangement. All Rights Reserved. This



report to the Chamber office.

**The parking spaces along BOTH SIDES of North Union Street from Route 417 to the railroad will be closed for parking vehicles at 4 PM.** Cars, trucks, etc. will be allowed to park back along these spaces after 830 PM.

Parade organizers stress that no spectators will be allowed to view on the medians and / or roundabouts during the parade.

Also, the detour route will be First Street from Wayne to Henley as well as East/West Henley from South First Street to South Barry Streets. No parking will be allowed along the detour route as well.



**BACK AGAIN:** Mercy Flight of Western New York will officially kick off the parade with a fly over and then their spotlight will shine up the parade route. Mercy Flight WNY is an independent, not-for-profit provider of emergency air-medical transport and supporting services, ensuring rapid, safe and cost effective delivery of expert emergency response teams.

**BRING YOUR UNWRAPPED GIFTS:** Paul Brown Dodge, Paul Brown Chevy and Toys 4 Tots will be teaming up again this year. Their goal is to collect as many toys as possible. **HELP THEM FILL UP THEIR PICK UP TRUCK...** with toys of course. Last year's Toys 4 Tots campaign helped many children in our immediate area.

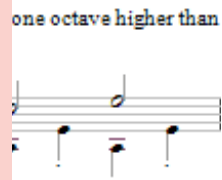
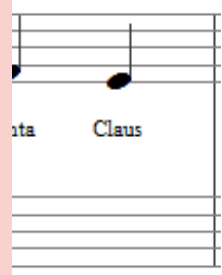
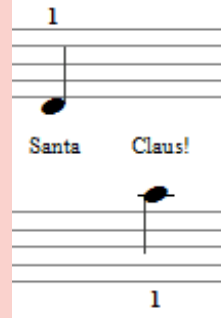
Look for the TOYS 4 TOTS Pick-up Truck on East State Street between Lincoln Park and the City building, after the Santa Claus Lane Parade. Let's work together and **FILL UP THIS PICK UP TRUCK!**



**OTHER ACTIVITIES:** GOACC is also encouraging organizations to participate in these other Thanksgiving week events:

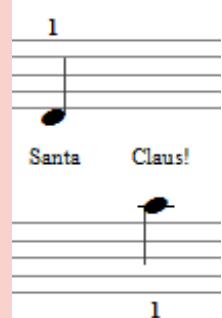
**NOVEMBER 22 – TURKEY TROT,** St. Bonaventure University, 9 AM. FEEL GOOD this Thanksgiving by starting your day with a non-timed 5K at SBU with over 200 other runners & walkers. This annual event is FREE to everyone, but organizers do ask that you bring healthy snacks/foods to donate to the Olean Food Pantry. Check in at SBU's Murphy Auditorium from 8-8:45 AM, and the 5K begins at 9:00 AM. Pre-register at the Olean YMCA or call the Y 716-373-2400. .

Comes S  
(Right Down Sant



© 1947 (Renewed) Gene Autry's W  
arrangement © 2009 (Renewed) Gene A  
All Rights Reserved. Use

Comes S  
(Right Down Sant



# Victorian Christmas

**NOVEMBER 23 – VICTORIAN CHRISTMAS**, Bartlett Historical House, 302 Laurens Street, Olean, 6 to 9 p.m. Come to this free affair to check out the Christmas decorations throughout the 15-room mansion, including a third-floor ballroom. Free refreshments.

# Portville Holiday

**NOVEMBER 24 — PORTVILLE'S HOLIDAY CELEBRATION**, Pioneer Park, Portville, 5 p.m. The Village Christmas Lighting Ceremony will feature singing until 5:30 PM when Santa arrives for the official lighting ceremony. Cookies, doughnuts, hot and cold beverages will be served

# Allegany Holiday

**NOVEMBER 24 — CHRISTMAS IN ALLEGANY'S HOLIDAY CELEBRATION**, Allegany, 6:30 p.m. The event is held at the Santa House located next to the Village of Allegany Municipal Building at 106 East Main Street, Allegany, NY. Santa, Mrs. Claus and some elves arrive to the event on a horse pulled wagon and children of all ages are given the opportunity to visit with Santa and receive a gift. Hot cocoa and cookies are served.

## COMPLETE PARADE LINEUP

**MORE INFO:** For more information regarding Santa Claus Lane or other Greater Olean Area events and activities, please call 716-372-4433 or [email](#).

Connect with us

